

## **EE/CprE/SE 491 BI-WEEKLY REPORT 4**

**Start Semester – 04/07/2023**

### **Group number:**

**sdmay23-41**

### **Project title:**

**Automated Testing Station for Sensing Applications**

### **Client &/Advisor:**

**Moneim Ismail**

### **Team Members/Role:**

**Thomas McCoy - Group Organizer, Software developer**

**Matthew Rief - CAD designs/3D printing**

**Garth Anderson - PCB designs**

**Malvin Lim - PCB designs**

### ○ **Weekly Summary**

Overall objective for this week was to get as close as possible to a testable design. Garth and Malvin continued working on PCB design, improvements, fixes, etc. Thomas continued work on the LabView program for project interface, and Matt continued 3D printing components and continued work on DUT platform design.

Thomas was out of state this week of 4/3 for the holy days.

### ○ **Past week accomplishments**

#### **Thomas McCoy:**

- Cleaned up LabView program.

#### **Garth Anderson:**

- Met with Malvin to compare the components that we got from ETG with the footprints in our PCBs.
- Changed the op amp in my photodetector circuit since we received different op amps from ETG than I was expecting.
- Fixed errors in footprints.

#### **Malvin Lim:**

- Tested on components I received from ETG: +-15V reg, 5V reg, and potentiometer: Capacitors, LMs, diode, and potentiometer.
- Double-checked PCB layout.
- Designed RGBW LED footprint.
- Worked in the lab in Coover Hall with Garth.
- Updated the footprints for the Capacitors to 1000uF and 100uF.
- Created a footprint for the op-amp

- Tested the Atmega chip with an Arduino Uno
- Checked the footprints and component arrangement.

**Matthew Rief:**

- Frame 3D printing
- O-rings.

○ **Individual contributions**

<b><u>NAME</u></b>	<b><u>Individual Contributions</u></b> <i>(Quick list of contributions. This should be short.)</i>	<b><u>Hours this week</u></b>	<b><u>HOURS cumulative</u></b>
Thomas McCoy	LabView programming (see list above)	3	31
Garth Anderson	PCB design improvements (see list above)	6	30
Malvin Lim	PCB design improvements (see list above)	6	32
Matthew Rief	CAD designs and 3D printing (see list above)	3	23

○ **Plans for the upcoming week**

**Thomas McCoy:**

- Continue LabView programming, get Keithley sweep data collection finalized.
- Save sweep data to files

**Garth Anderson:**

- Meet with Mo to check designs
- Send designs to ETC

**Malvin Lim:**

- Same as listed under Garth.

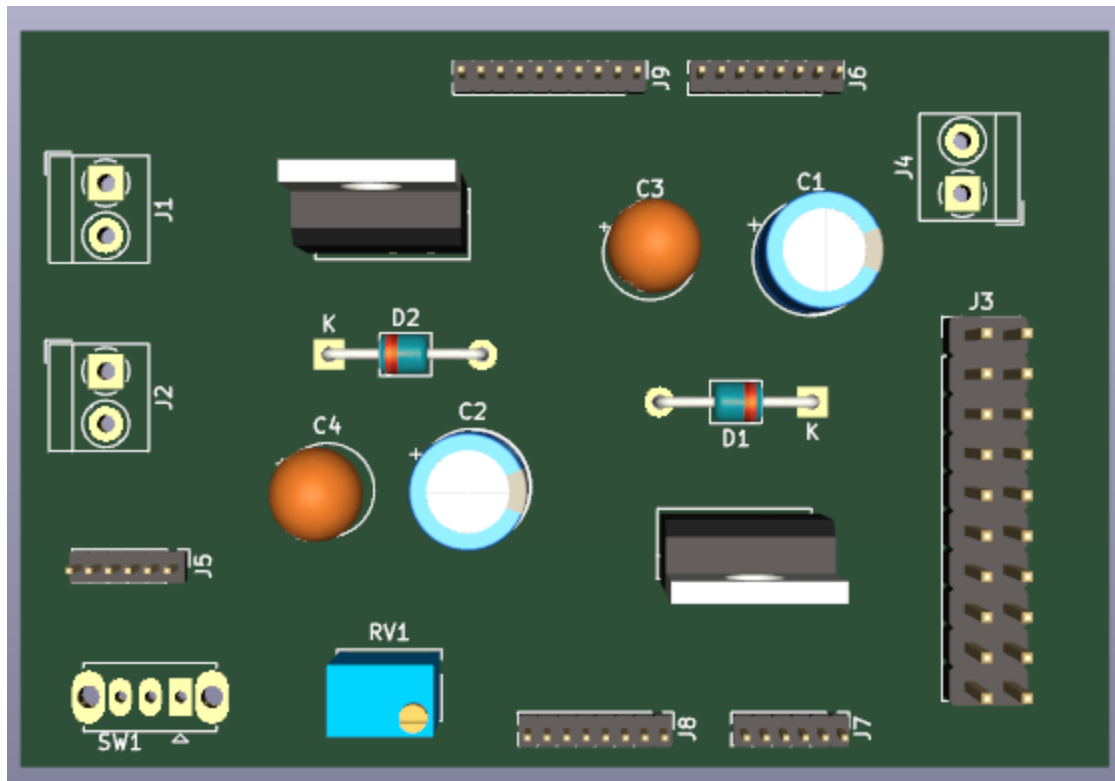
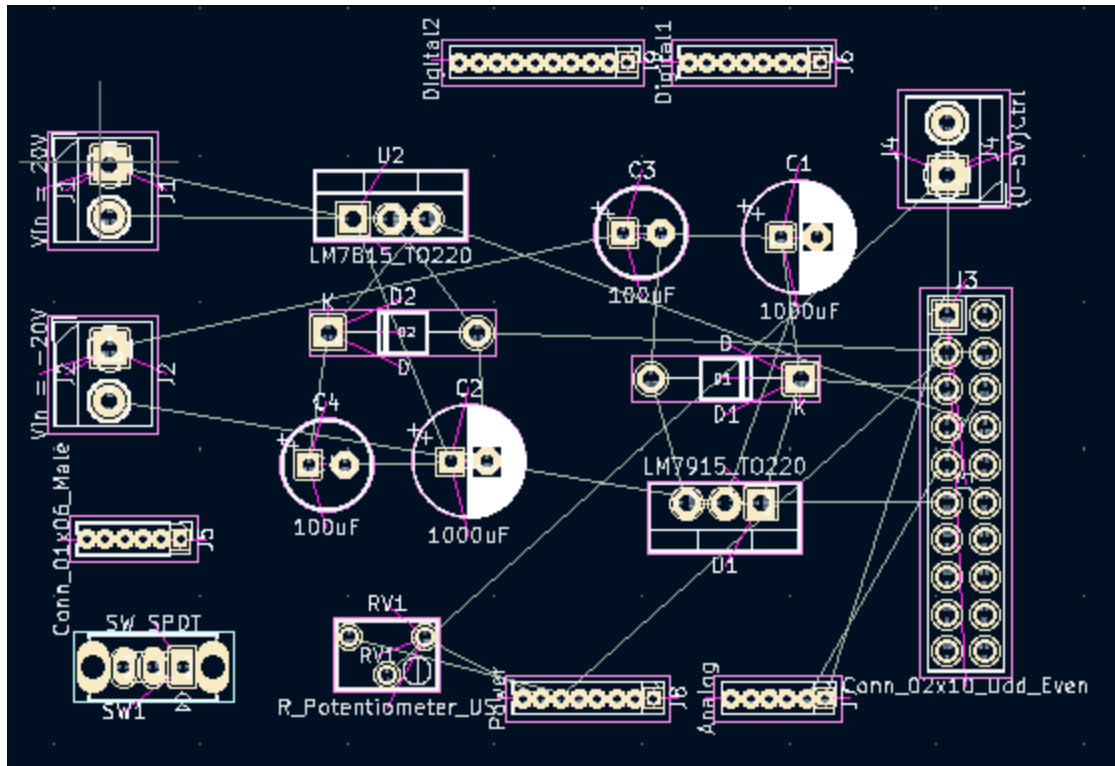
**Matthew Rief:**

- Make the base and sides of the box thin with a high filling ratio.
- Print a prototype for everything using a low resolution filling ratio. (20% or 10%)

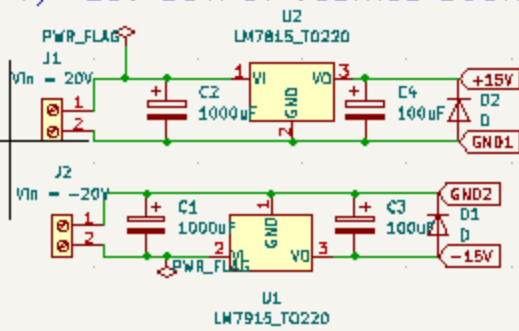
○ **Summary of weekly advisor meeting**

Discussed some changes, and proposed a small design change. The 2nd week meeting was canceled because a majority of the group couldn't attend.

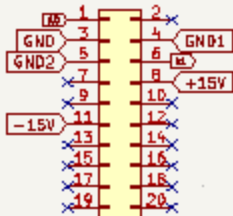
○ Diagrams



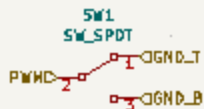
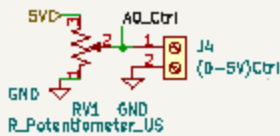
## +/-15V OUTPUT VOLTAGE SOURCE



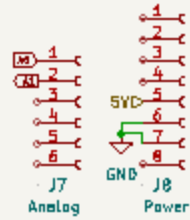
## Connector



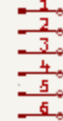
## 0-5V



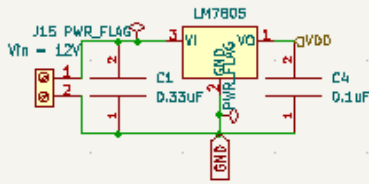
## Connector Pins



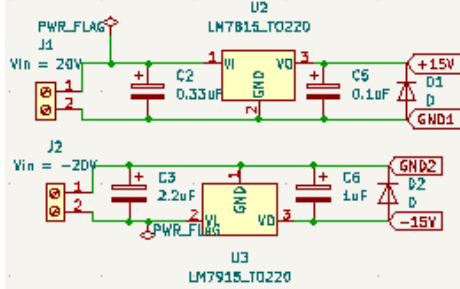
## J5 Conn\_01x06\_Male



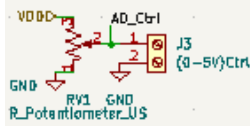
### MC VOLTAGE SOURCE (5V Reg)



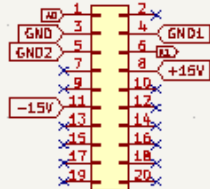
### +/-15V OUTPUT VOLTAGE SOURCE



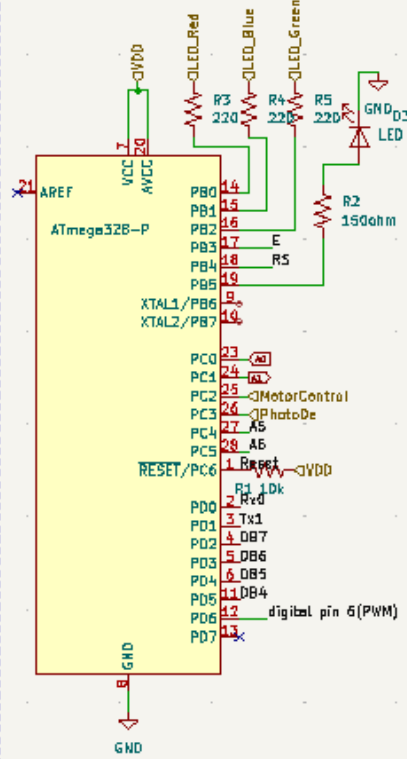
### 0-5V



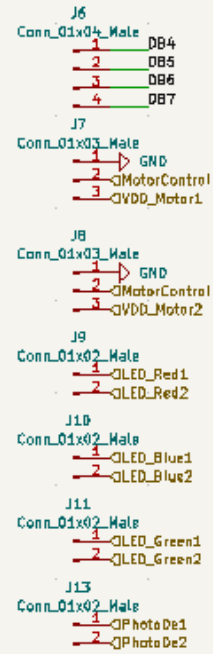
### Connector



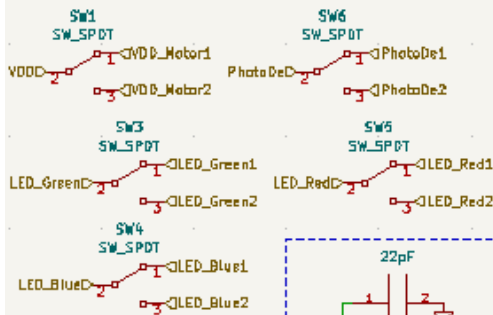
### MICROCONTROLLER



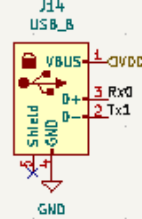
### Connector pins



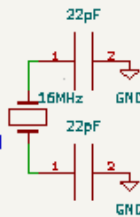
### Switches



### USB B port



### Crystal for Atmega



Sheet  
File:  
776  
Size:  
KiCo

